

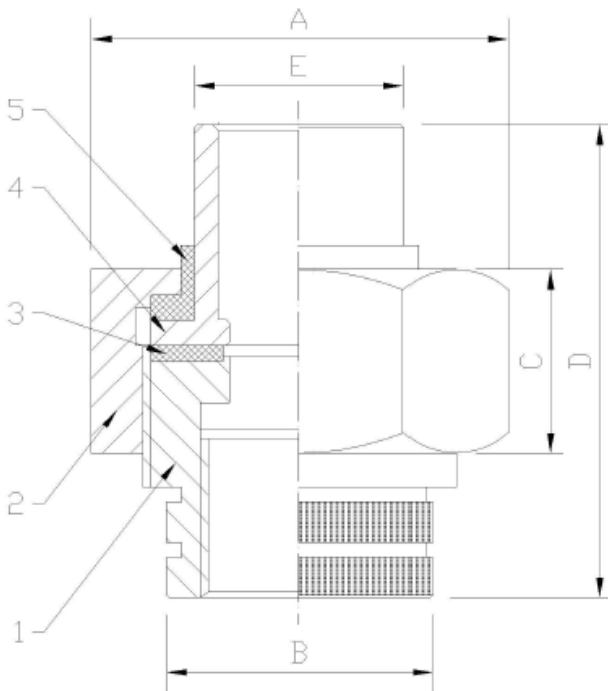
# LF Dielectric Union - Female X Sweat • Spec Sheet



## FEATURES & BENEFITS

- Lead Free Brass\*
- Sizes 1/2" - 2"

## DIMENSIONS



| Part #     | Size        | A    | B    | C    | D    | E    |
|------------|-------------|------|------|------|------|------|
| DUN-0509LF | 1/2"        | 1.42 | 1.00 | 0.77 | 1.87 | 0.83 |
| DUN-7559LF | 3/4" X 1/2" | 1.62 | 1.26 | 0.77 | 1.87 | 0.83 |
| DUN-0759LF | 3/4"        | 1.62 | 1.26 | 0.77 | 2.11 | 1.06 |
| DUN-1009LF | 1"          | 1.89 | 1.50 | 0.87 | 2.32 | 1.30 |
| DUN-1259LF | 1-1/4"      | 2.25 | 1.81 | 0.91 | 2.58 | 1.58 |
| DUN-1509LF | 1-1/2"      | 2.76 | 2.13 | 0.95 | 2.80 | 1.81 |
| DUN-2009LF | 2"          | 3.51 | 2.60 | 1.06 | 3.11 | 2.36 |

## MATERIAL SPECIFICATIONS

| No. | Part              | Material        |
|-----|-------------------|-----------------|
| 1   | IPS Connection    | Zinc Coat Steel |
| 2   | Nut               | Zinc Coat Steel |
| 3   | Gasket            | EPDM            |
| 4   | Solder Connection | Brass           |
| 5   | Insert            | Nylon           |

\* This product complies with 0.25% weighted average lead content on wetted surfaces in accordance with CA AB1953.

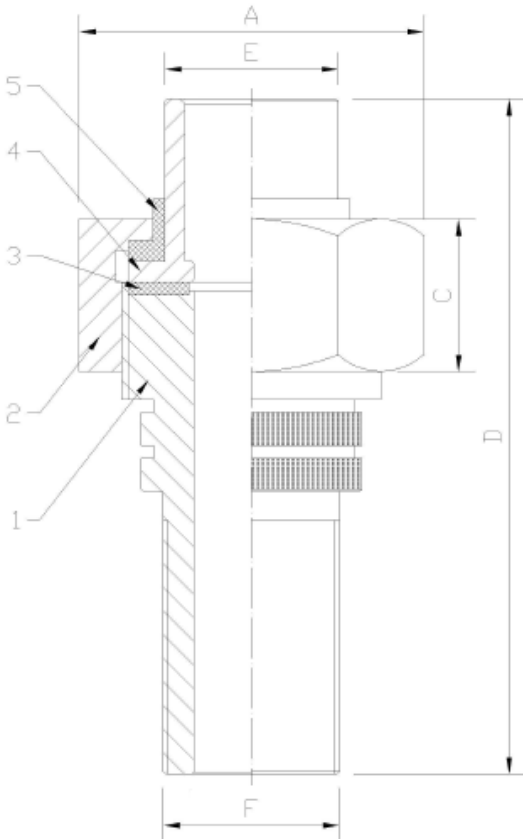


# LF Dielectric Union - Male X Sweat • Spec Sheet



## FEATURES & BENEFITS

- Lead Free Brass\*
- Sizes 3/4"



## DIMENSIONS

| Part #     | Size  | A    | B    | C    | D    | E    |
|------------|-------|------|------|------|------|------|
| DUN-759MLF | 3/4 " | 1.62 | 1.07 | 0.72 | 2.90 | 1.23 |

## MATERIAL SPECIFICATIONS

| No. | Part              | Material        |
|-----|-------------------|-----------------|
| 1   | IPS Connection    | Zinc Coat Steel |
| 2   | Nut               | Zinc Coat Steel |
| 3   | Gasket            | EPDM            |
| 4   | Solder Connection | Brass           |
| 5   | Insert            | Nylon           |

\* This product complies with 0.25% weighted average lead content on wetted surfaces in accordance with CA AB1953.



# LF Dielectric Union - Female X BPT • Spec Sheet

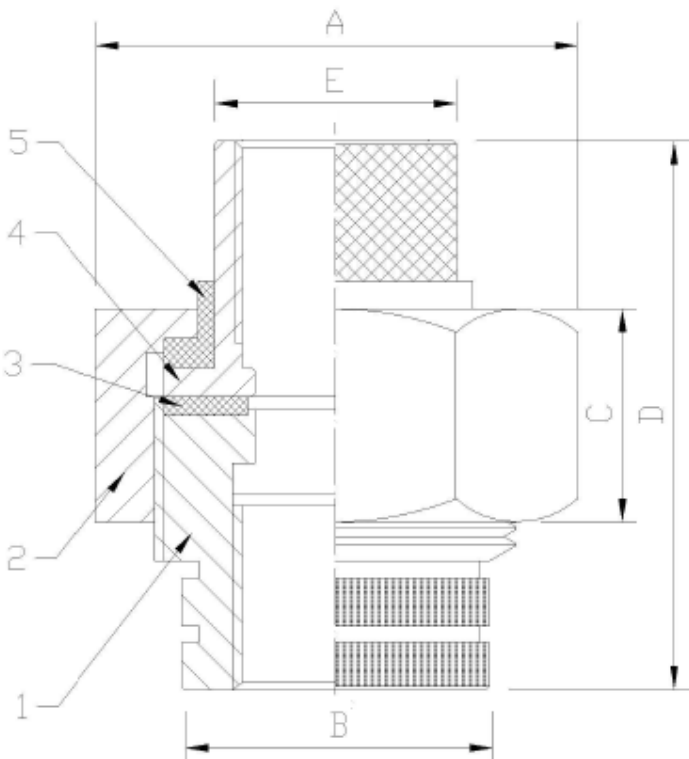


## FEATURES & BENEFITS

- Lead Free Brass\*
- Sizes 1/2" - 2"

## DIMENSIONS

| Part #     | Size   | A    | B    | C    | D    | E    |
|------------|--------|------|------|------|------|------|
| DUN-EA03LF | 1/2"   | 1.62 | 1.02 | 0.77 | 2.21 | 1.02 |
| DUN-EA04LF | 3/4"   | 1.89 | 1.26 | 0.77 | 2.21 | 1.26 |
| DUN-ES05LF | 1"     | 2.25 | 1.50 | 0.87 | 2.52 | 1.46 |
| DUN-EA06LF | 1-1/4" | 2.76 | 1.81 | 0.91 | 2.72 | 1.85 |
| DUN-EA07LF | 1-1/2" | 3.51 | 2.13 | 0.91 | 2.76 | 2.13 |
| DUN-EA08LF | 2"     | 4.14 | 2.60 | 1.10 | 3.11 | 2.60 |



## MATERIAL SPECIFICATIONS

| No. | Part              | Material        |
|-----|-------------------|-----------------|
| 1   | IPS Connection    | Zinc Coat Steel |
| 2   | Nut               | Zinc Coat Steel |
| 3   | Gasket            | EPDM            |
| 4   | Solder Connection | Brass           |
| 5   | Insert            | Nylon           |

\* This product complies with 0.25% weighted average lead content on wetted surfaces in accordance with CA AB1953.

